



THE  DIFFERENCE

Flexible workspace on demand that improves productivity while creating flexibility for your business.



PRIVATE OFFICES

Boost team morale, encourage collaboration, let creativity run wild. office plans available for teams of 1 to 100. Our fully serviced offices give your business the ability to operate independently, have leaner, consistent expenses while enjoying less distractions.



COWORKING

Vibrant, inspirational, open plan spaces by the day, week or month removing the pressures of long term commitment. Enjoy business class infrastructure whenever you need it.

A few ways coworking just makes sense:

- Use coworking space for short-term contracts.
- Dedicated office spaces help specialized teams within your company that need more resources, tools, and connections outside the home office.
- Keep costs down by having a smaller core office space for client-facing interactions and house the rest of your team in a coworking space.
- Create a hot-swappable workzone for multiple team members that offers per seat pricing, billed only as needed.

Choose an office, change lives.

Join our community of AMAZING businesses while changing the lives of others, locally and beyond. At no extra charge!

Together with incredible people like you, we've been able to change the lives of thousands of people in partnership with our 501(c)3, the Gabriel Project because we donate 10% of our Gross Revenues each year to help make the world better.

With our ONE+ONE program for example, when you move into a new office, you're automatically funding a new, clean water well in a developing nation. We've been built hundreds of them and **they're incredible**, saving lives and bringing hope, every single day.



2014

Est. Gabriel Project

Gabriel Project founded at the same time as WorkLodge to build a Social Enterprise that would use its profits to change lives.

2018

Orphanage Two & Three Built

Homes #2 & #3 successfully opened in India.

2014-2020

Food distribution program

Approx. \$1m of fresh food delivered annually to families in Texas.

2017

First Orphanage Built

First children's home (for 50 kids) opened in India.

2019-2020

Clean Water to 2500+

Clean water well project begins, delivering life to rural villages in Cambodia.

Who you do business with matters.



V S

OTHER FLEXIBLE WORKSPACE



Monthly Office Fees

Clear, commitment free pricing, penalty free agreements & all-inclusive monthly fees with no hidden extras! Choose month to month or 3 years, it's your call.

Escalations, promotional rates and other sales 'tricks' that hook you, and then nickel and dime you resulting in monthly invoices that rarely match your originally quoted rate.



Scale Up, Scale Down

Use what you need. Scale up or scale down as your business requirements change penalty free.

Prioritizing new customers at the expense of existing customers means once you're in, there's little incentive to help you when you need to make a change.



Match Your Budget

Professional, inspirational options that match every budget.

Deals, promos and confusing plans combined with limited office options could force you into paying for more than you need, or want.



The Little Things

Essential services for your business can add up. We take care of them for you. Internet, phone, printing, document shredding, on-site notary, mail and package handling and more!

Full service means different things to different providers. Nobody's 'full service' is as 'full service' as WorkLodge.

There's plenty of places to work.
 Make the right decision first time with
 this handy chart to help.

- ✓ = Included
- ? = Unknown availability
- ✗ = Not available



WORKLODGE COWORKING RENT/LEASE

VIRTUAL OFFICES, WORK FROM HOME PLANS,
 COWORKING, PRIVATE OFFICE

✓ ✓ ✗

PODCAST/FILMING STUDIOS

✓ ? ✗

CONVENIENT, SUBURBAN LOCATIONS

✓ ? ?

OVERSIZED OFFICES

✓ ✗ ✗

CUSTOM LAYOUT & DESIGN

✓ ✗ ✓

LARGE, PREMIUM DESKS

✓ ✗ ✗

PRIVATE LABEL PREMIUM CHAIRS

✓ ✗ ✗

INSPIRING WORLD CLASS INTERIOR DESIGN

✓ ✗ ✗

ENHANCED, 24/7 SAFETY & SECURITY

✓ ✗ ✗

NO MIDDLE MAN (BROKER'S WISE)

✓ ✓ ✗

PROFESSIONAL ADMINISTRATIVE SERVICES

✓ ? ✗

ENTERPRISE GRADE INFRASTRUCTURE

✓ ✗ ✗

BUSINESS ADDRESS

✓ ✓ ✓

MAIL & PACKAGE HANDLING

✓ ✓ ✗

PHONE WITH AUTO-ATTENDANT

✓ ✗ ✗

UNLIMITED AMENITIES
 (FREE COFFEE, FLAVORED WATER, WI-FI)

✓ ✗ ✗

TURN-KEY (WALK IN, PLUG IN, WORK)

✓ ? ✗

BUSINESS CONTINUITY

✓ ✗ ✗

NO 'INTRODUCTORY PROMOS'
 THAT GO UP MONTHS LATER

✓ ✗ ✗

NO PERSONAL GUARANTEES*

✓ ✗ ✗

NO CANCELLATION FEES

✓ ✗ ✗

*Waive personal guarantees with our optional 'commitment free' upgrade.

ADDING VALUE

While building on our Member Experience

| | WORKLODGE | COWORKING | RENT/LEASE |
|--|-----------|-----------|------------|
| FREE MEMBER & VISITOR PARKING (SAVING \$100S) | ✓ | ✗ | ✗ |
| NO NICKEL AND DIME (I.E. NO FEE FOR A FORGOTTEN KEY) | ✓ | ✗ | ✗ |
| NO ESCALATIONS AT RENEWAL | ✓ | ✗ | ✗ |
| PRICE GUARANTEE | ✓ | ✗ | ✗ |
| CAPPED INCREASE TO HELP WITH BUDGETING | ✓ | ✗ | ✗ |
| PENALTY FREE UPGRADES/DOWNGRADES | ✓ | ✗ | ✗ |
| FLEXIBLE SHORT-TERM AGREEMENTS | ✓ | ✗ | ✗ |
| DISCOUNTED BOOKING & DAY PASS RATES | ✓ | ? | ✗ |
| PROFESSIONAL, MATURE WORK ENVIRONMENT | ✓ | ✗ | ✗ |
| CAUSE DRIVEN, SOCIAL IMPACT | ✓ | ✗ | ✗ |
| NETWORKING | ✓ | ✓ | ✗ |
| CLEAN, QUIET WORKSPACE | ✓ | ✓ | ✓ |
| HAPPY HOURS & EVENTS | ✓ | ✓ | ✗ |
| MEMBER WORKSHOPS | ✓ | ✓ | ✗ |
| BUSINESS DIRECTORY | ✓ | ✓ | ✗ |

We save you money, while delivering more value AND delivering a more boutique experience !

At WorkLodge, it's all about YOU.



COST COMPARISON WITH TRADITIONAL REAL ESTATE

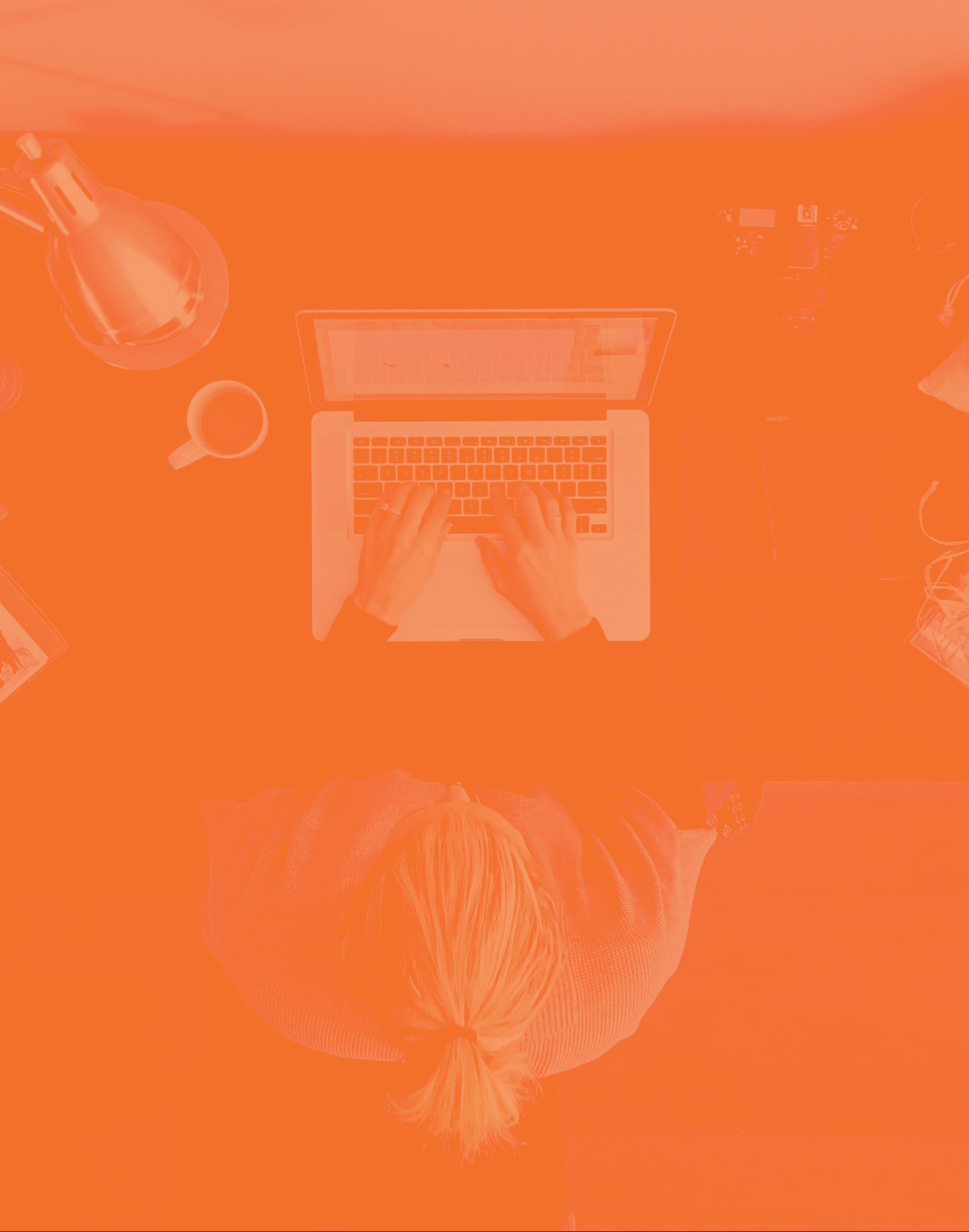
Based on approx. 1,000 sq.ft. of traditional space.

| | TRADITIONAL REAL ESTATE | WORKLODGE | SAVINGS |
|----------------------------|-------------------------|-----------------|-----------------|
| MONTHLY FEE | \$2,650 | \$3,950 | -\$1,300 |
| CAM / TAXES / INSURANCE | \$950 | \$0 | \$950 |
| INTERNET | \$200 | \$0 | \$200 |
| PHONE | \$69 | \$50 | \$19 |
| ELECTRICITY | \$425 | \$0 | \$425 |
| WATER | \$45 | \$0 | \$45 |
| CLEANING | \$300 | \$0 | \$300 |
| OFFICE SUPPLIES | \$75 | \$0 | \$75 |
| PARKING / SECURITY | \$600 | \$0 | \$600 |
| SECURE DOCUMENT SHREDDING | \$60 | \$0 | \$60 |
| MAINTENANCE | \$40 | \$0 | \$40 |
| TOTAL MONTHLY COSTS | \$5,414 | \$4,000 | \$1,414 |
| TOTAL ANNUAL COSTS | \$64,968 | \$48,000 | \$16,968 |
| FURNITURE | \$18,000 | \$0 | \$18,000 |
| CONSTRUCTION / DECOR | \$20,000 | \$0 | \$20,000 |
| DEPOSIT / SECURITY | \$7,950 | \$3,950 | \$4,000 |
| TOTAL 1 YEAR COST | \$110,918 | \$51,950 | \$58,968 |

Save an estimate **\$58,968** in year 1 and **\$17,568** each year after by choosing WorkLodge!



Based on a mid-sized Team Suite for 8 people.



WORKLODGE

118 VINTAGE PARK BLVD, SUITE W, HOUSTON TX 77070
(844) 967-5563 | WWW.WORKLODGE.COM



WORKLODGE™

WORKSPACE. CHANGING LIVES.